

# MSD IGNITION INSTALLATION INSTRUCTIONS

## MSD Digital Shift Light PN 8963

### Parts Included:

1 - Shift Light	2 - Washers
1 - Mounting Bracket	1 - Brass Screw
1 - GMR Pickup, PN 8918	1 - Parts Bag

**WARNING:** When installing the Shift Light disconnect the battery cables. When disconnecting, always remove the negative cable first and install it last.

**IMPORTANT:** Do NOT connect to the coil (-) terminal. The supplied GMR pickup must be used when installing the Digital Shift Light unless the rpm signal is coming from the tach output of an MSD Ignition or aftermarket ECU. Damage to the DSL will occur if connected to a high voltage trigger source.

### PROGRAMMING

By pressing the two buttons simultaneously, you get the Shift Light into the different programming modes.

**RPM Points:** To adjust rpm points, press the two buttons until the rpm shows. Notice that all but one of the numbers flash. The position of the steady digit matches the gear change (the first, second, third or fourth digit equals each gear). Adjust the rpm then push the two buttons again to move to the next gear.

**Cylinder Count:** The display will read CY and allow you to select between one to 12-cylinder engines using the Up/Down buttons.

**Intensity:** Control the intensity of the LED and read out. Hold the buttons until LuL displays. Use the buttons to select from 9 (brightest) to 0 to turn off the shift light.

**Self:** Self mode will walk through all of the settings programmed into the light. It will first show the rpm shift points for the four shifts, the cylinder count and light intensity. Start the test mode by pushing either button once Self is displayed. To reset the Self mode, push either button when SELF is displayed, or turn the power Off.

Each time the DSL is powered on, the LED will display the program values that are set.

### INSTALLATION

The Shift Light installs easily with the GMR Pickup or through the tach output terminal of an MSD Ignition Control or aftermarket ECU. It will accept a trigger signal rated from 0-24 volt amplitude. **Never connect the Green Wire directly to the coil negative terminal.**

If an ignition control or aftermarket ECU are not being used, the GMR pickup must be connected.

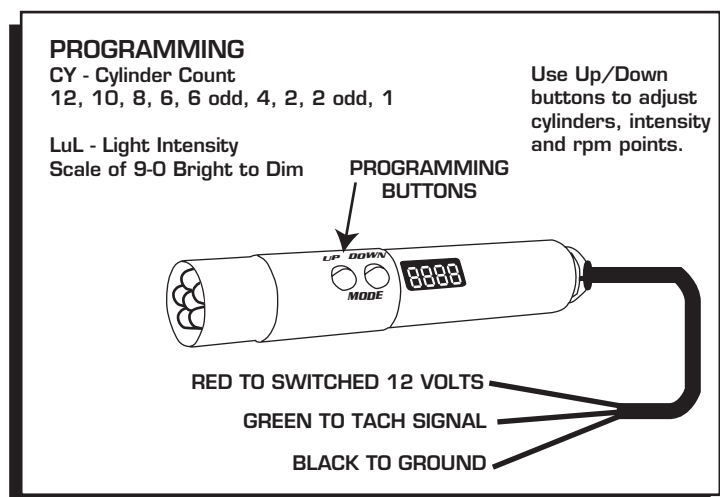


Figure 1 Digital Shift Light Wiring and Programming.

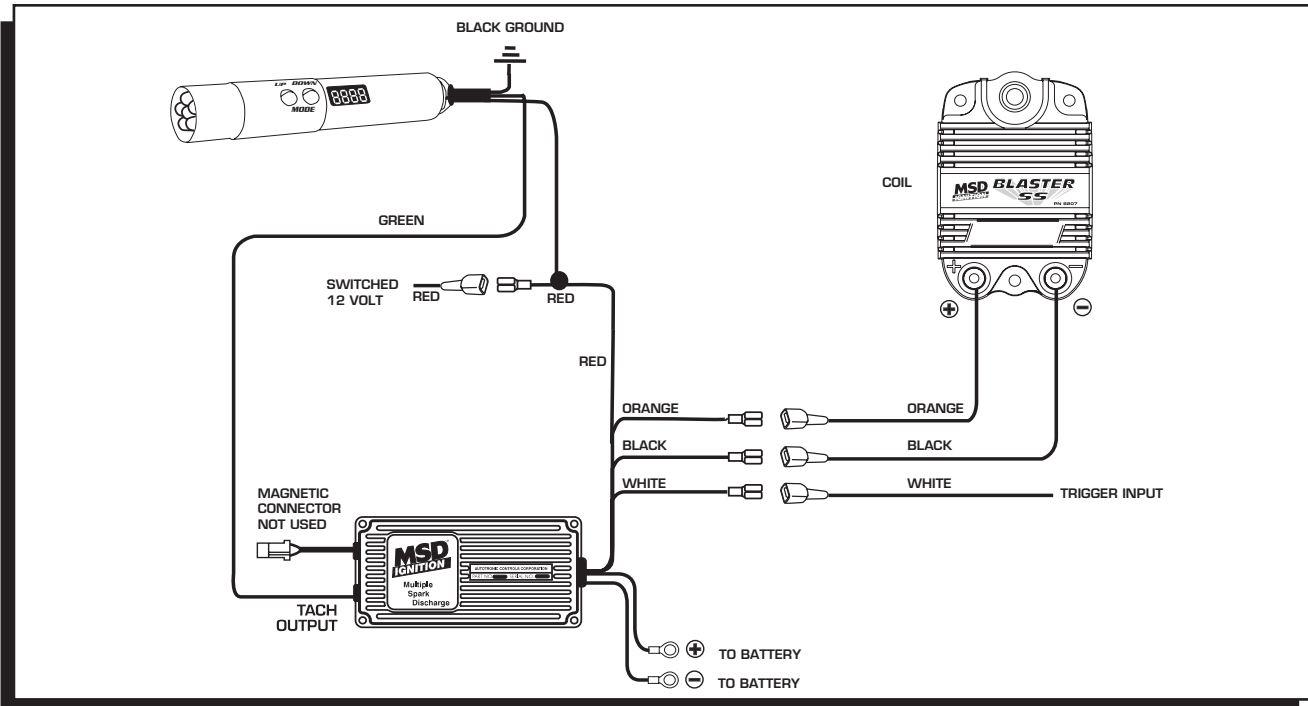


Figure 2 Installing with an MSD Ignition.

**GMR PICKUP INSTALLATION**

The MSD GMR pickup can be used with inductive or capacitive ignition types to provide an rpm signal of 30% duration when the ignition coil fires. Two washers are provided with the pickup and must be installed in one of two positions depending on the type of ignition driving the coil.

**Note:** For late model applications, it is recommended to have a wiring schematic of the vehicle's ignition system.

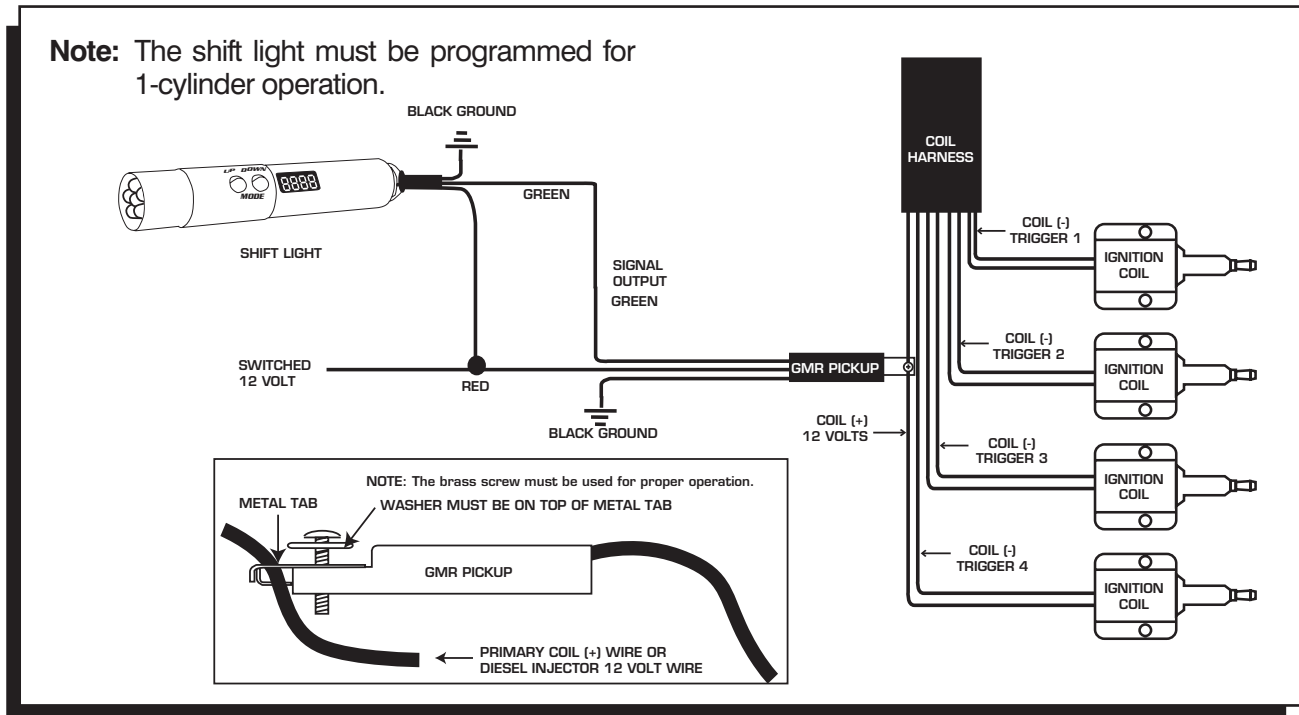


Figure 3 Installation on an Inductive Coil-Per-Cylinder Ignition System.

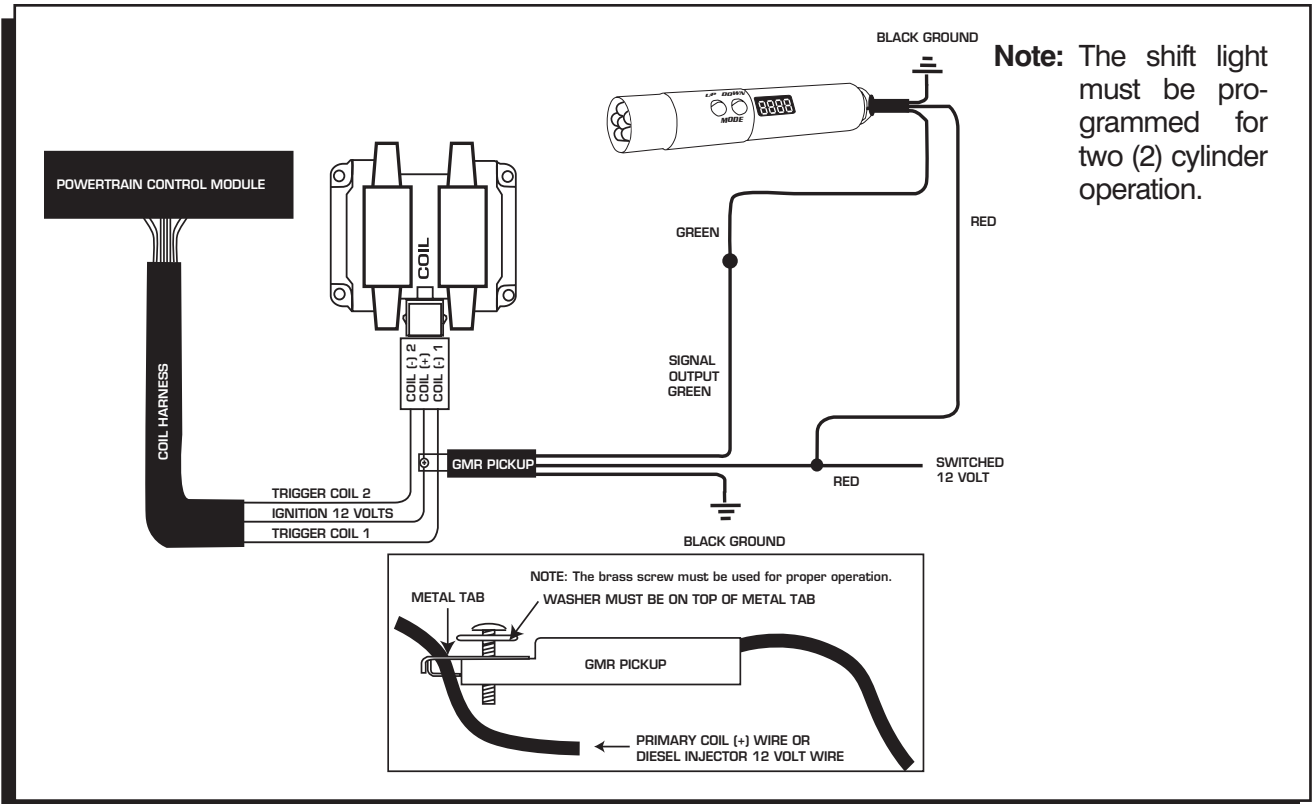


Figure 4 Installing to an Inductive Coil Pack.

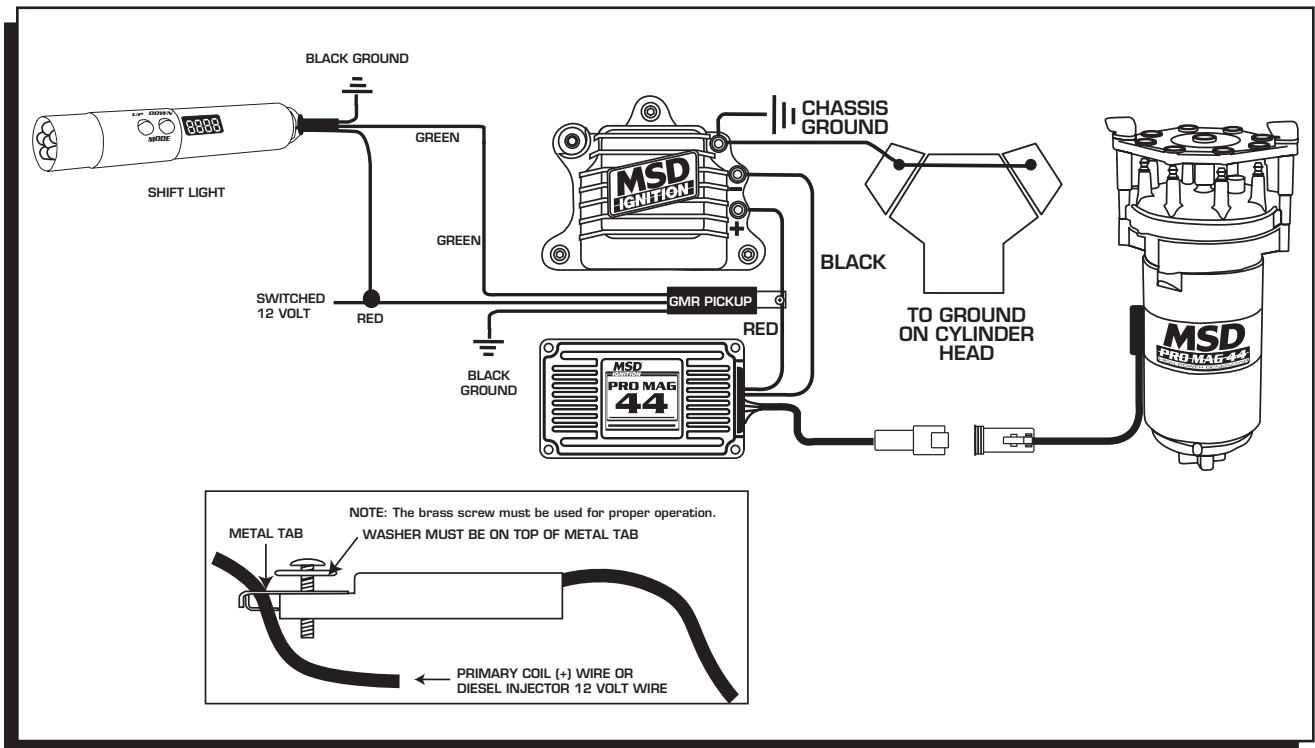


Figure 5 Wiring the Pro Mag 44 Electronic Points Box.

**NOTE:** A momentary push button switch can be connected with tach input green wire to ground to reset the PN 8963 to the first gear value at any time - normally the RPM must drop to under 1700 rpm for the PN 8963 to reset to the first gear value.

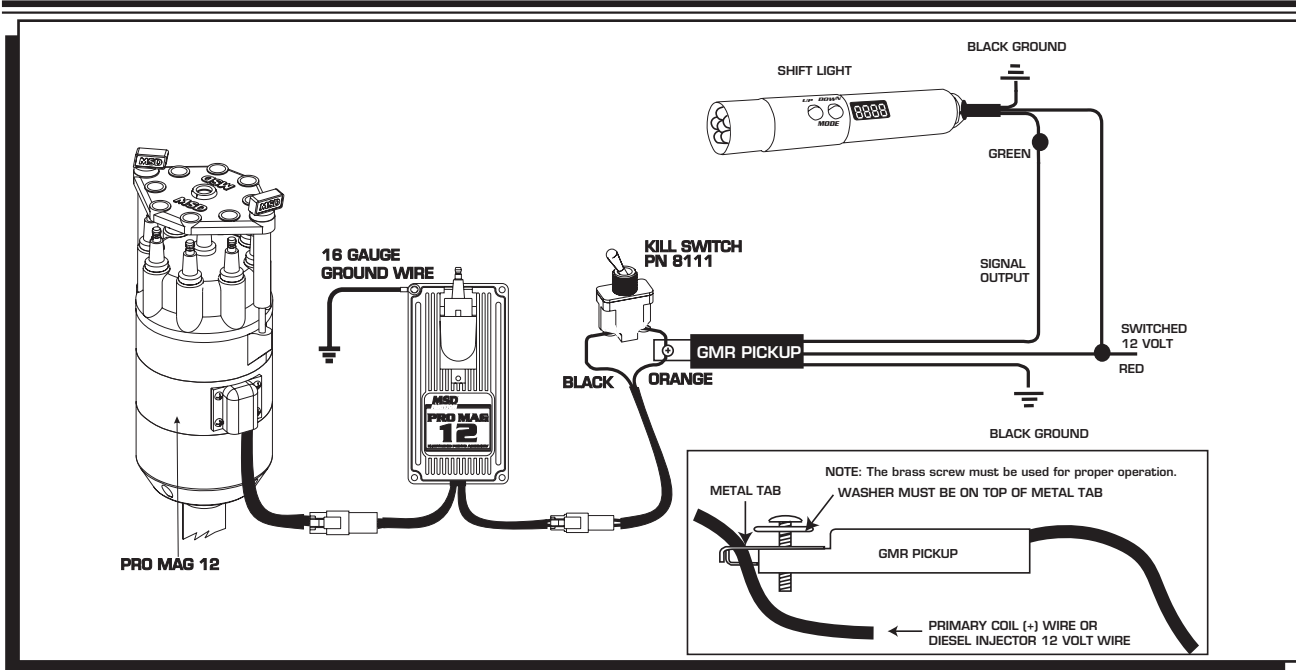


Figure 6 Wiring the 12 Amp Pro Mag.

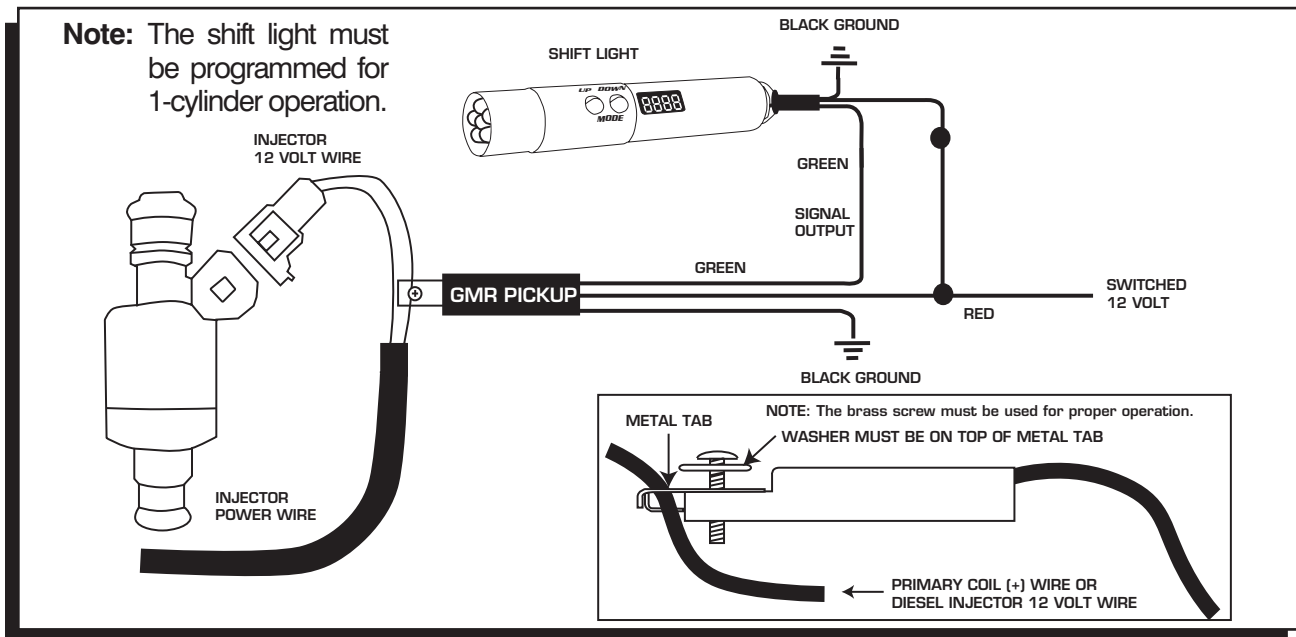


Figure 7 Installation to a Diesel Injector.

### Service

In case of malfunction, this MSD component will be repaired free of charge according to the terms of the warranty. When returning MSD components for service, **Proof of Purchase** must be supplied for warranty verification. After the warranty period has expired, repair service is charged based on a minimum and maximum charge.

**All returns must have a Return Material Authorization (RMA) number** issued to them before being returned. To obtain an RMA number please contact MSD Customer Service at 1 (888) MSD-7859 or visit our website at [www.msdisignition.com/rma](http://www.msdisignition.com/rma) to automatically obtain a number and shipping information.

When returning the unit for repair, leave all wires at the length in which you have them installed. Be sure to include a detailed account of any problems experienced, and what components and accessories are installed on the vehicle.

The repaired unit will be returned as soon as possible after receipt. (Ground shipping is covered by warranty). All units are returned regular UPS unless otherwise noted. For more information, call MSD Ignition at (915) 855-7123. MSD technicians are available from 7:00 a.m. to 6:00 p.m. Monday - Friday (mountain time).