



## Ford '15+ Focus ST and '16+ Focus RS Steeda Oil Separator

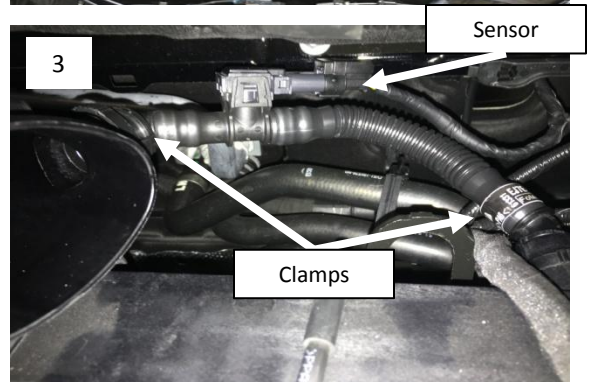
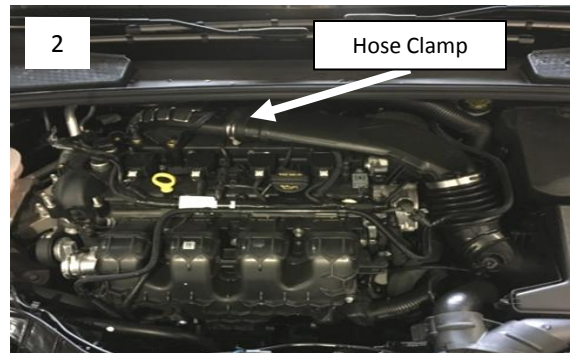
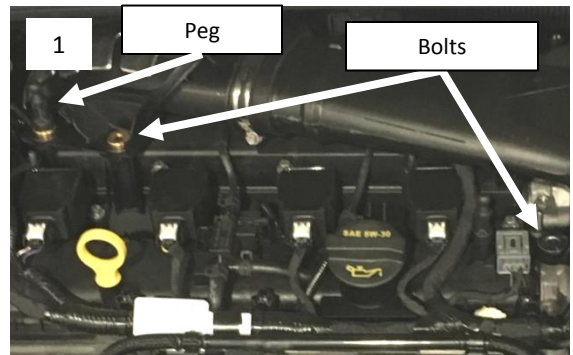
Instructions for parts #555-3717

### Tools Needed:

1. Ratchet
2. 8mm socket and 12mm deep socket
3. Box cutter or razor blade
4. 14mm box end wrench

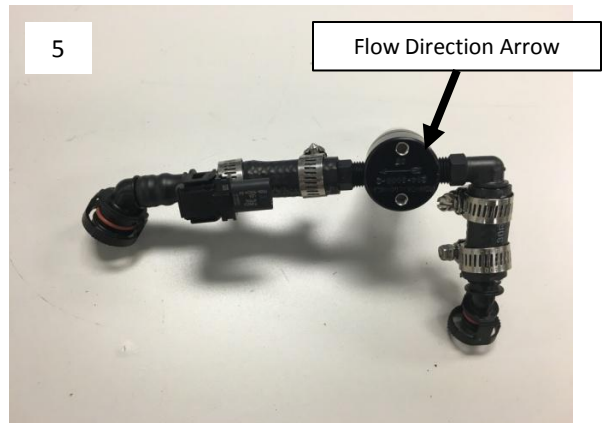
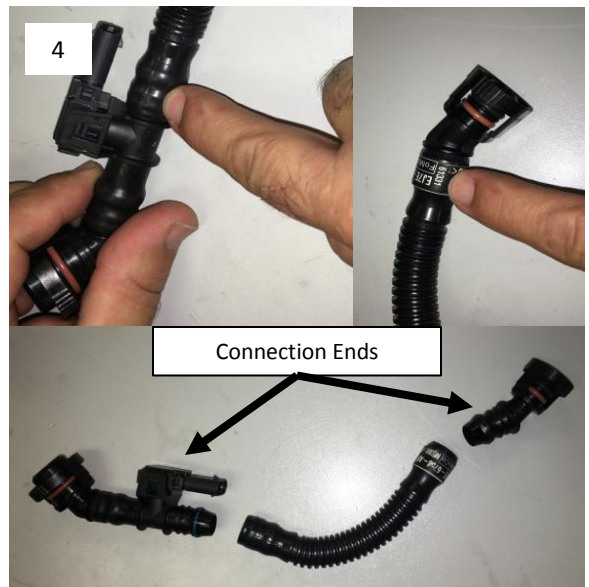
### Removing the Stock PCV hose

1. Carefully remove the engine cover by pulling up on the corners.
2. Remove the bolts and peg holding the hard plastic intake tube to the engine shown in Figure 1.
3. Loosen the hose clamp securing the hard plastic intake tube as seen in Figure 2 and move the hard plastic intake tube out of the way to gain access behind it.
4. Unplug the sensor on the stock PCV hose shown in Figure 3.
5. Remove the stock PCV hose from the intake tube and from the valve cover by depressing the clamps indicated in Figure 3.



## Assembling the Steeda Oil Separator

6. Cut the plastic heat shrink off of the indicated ends in Figure 4.
  - a. **KEEP the connection ends for use with Steeda Oil Separator.**
7. Assemble the Steeda Oil Separator as shown in Figure 5. Install hose clamps loosely onto the supplied rubber hoses.
  - a. **Canister INLET – 90° elbow fitting**
  - b. **Canister OUTLET – straight fitting**
  - c. **Note: Do NOT over tighten the fittings into the canister. The fittings use NPT (pipe) threads, meaning they do not have to “bottom” out to be sealed.**
  - d. **Check to make sure air flow through the separator is going FROM the valve cover TO the intake tube (arrow on top of oil separator for flow direction shown in Figure 5).**



## Installing the Steeda Oil Separator

8. Install the Steeda Oil Separator as shown in Figure 6 by connecting the clamps.
  - a. **Ensure the canister is level.**
  - b. **Note: Due to manufacturing tolerances, rubber hoses may be trimmed for desired fitment.**
9. Tighten the hose clamps once the Steeda Oil Separator is in place.
10. Reinstall the hard plastic intake tube and accompanying hardware followed by the engine cover.

